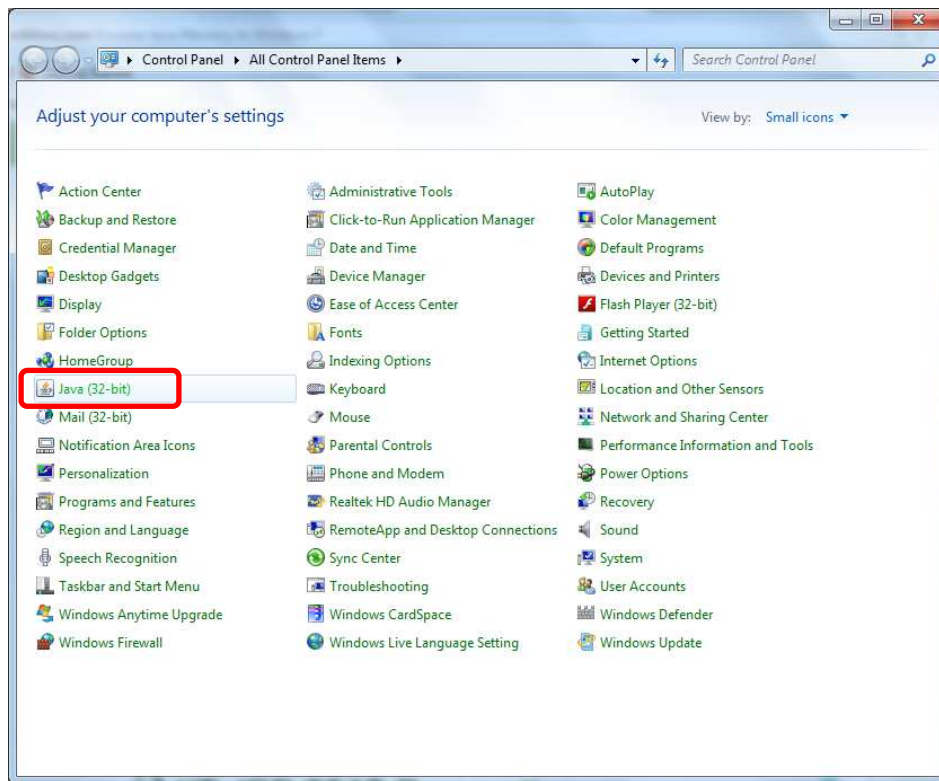
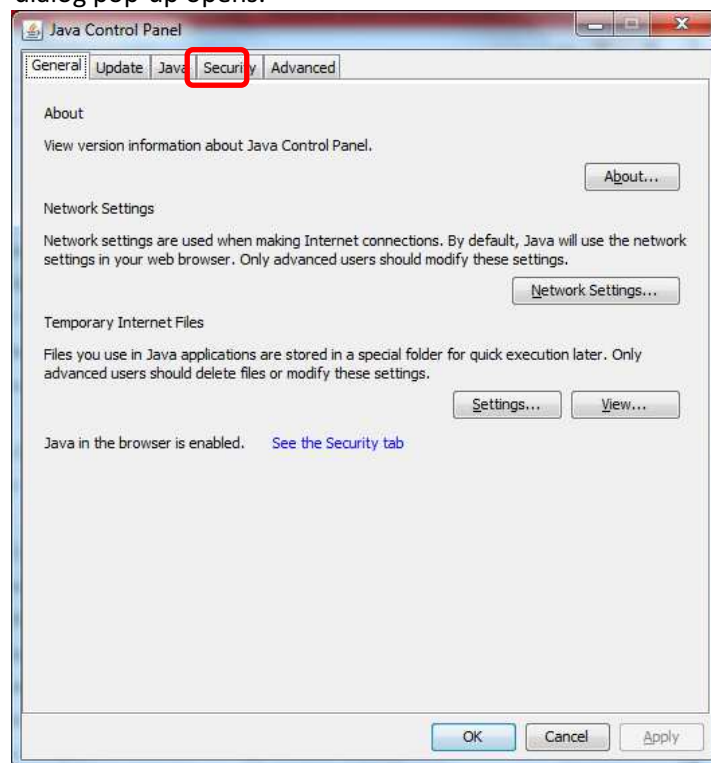


How to Increase Java Virtual Memory in Windows 7

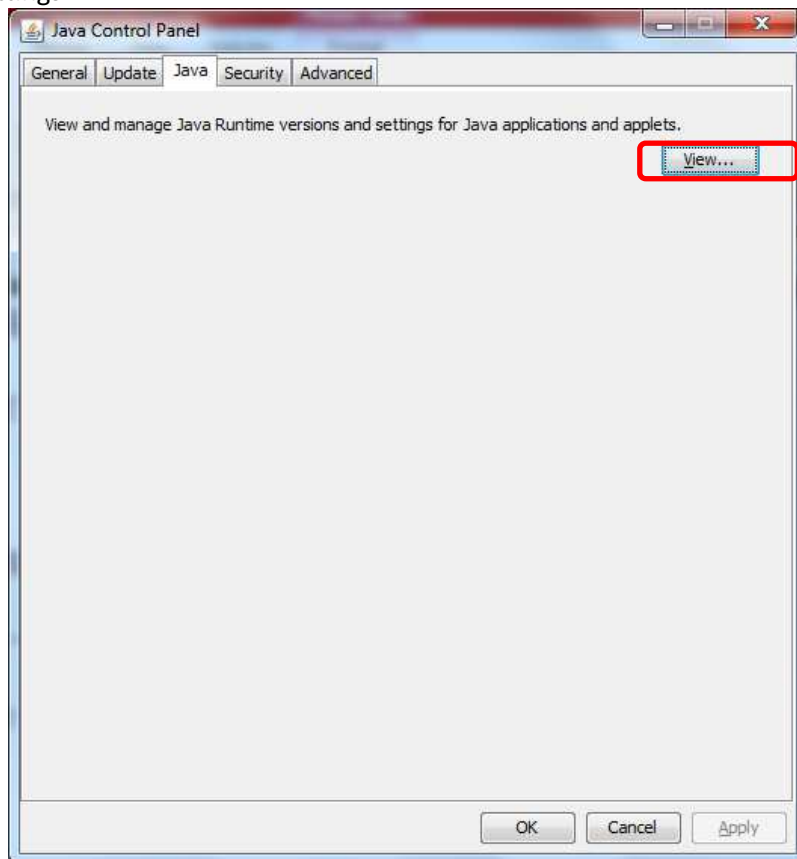
1. Go to Control Panel. Click on "Start" button. Then click on "Control Panel."



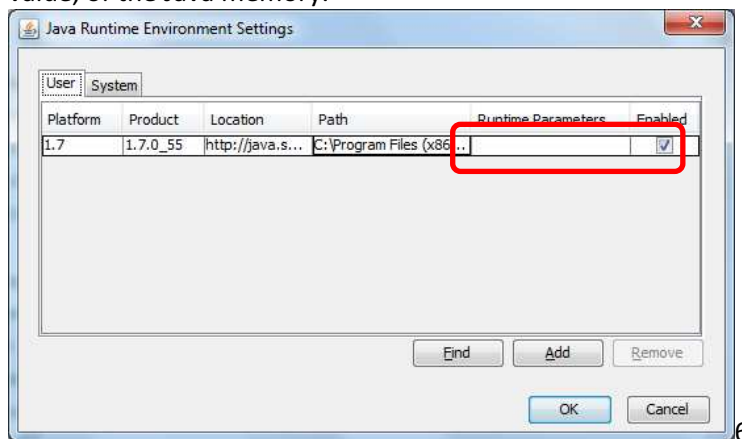
Go to Java settings. In the next dialog click on "Java," usually at the bottom of the other Programs; "Java Control Panel" dialog pop-up opens.



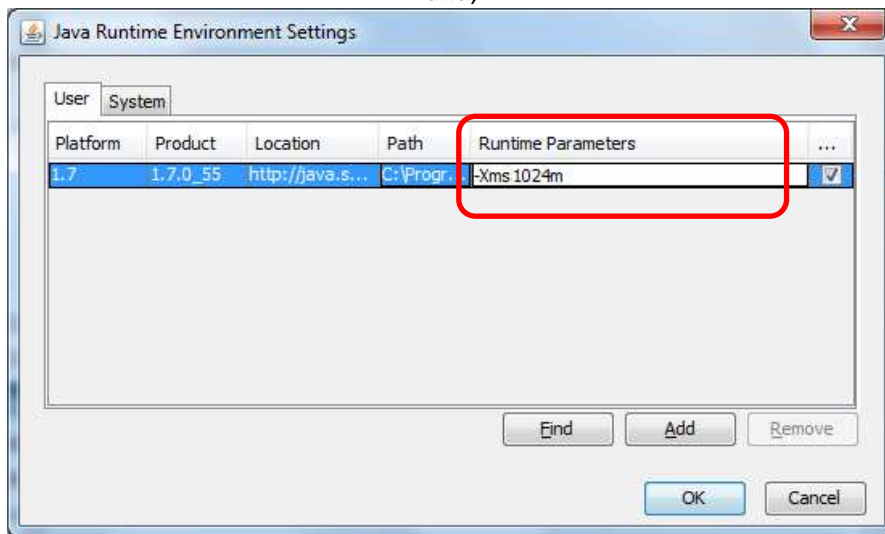
Select "Java" tab. Inside the Java tab, click on "View" button. It opens the "Java Runtime Environment Settings"



Change amount of heap. In the "Runtime Parameters" column change the value, or if it is blank decide for the new value, of the Java memory.



Modify the parameter. To modify the parameter, double click in the "Runtime Parameters" column and,



type -Xms 512m - that assigns 512MB memory for the Java.

type -Xms 1024m - that assigns 1GB memory for the Java.

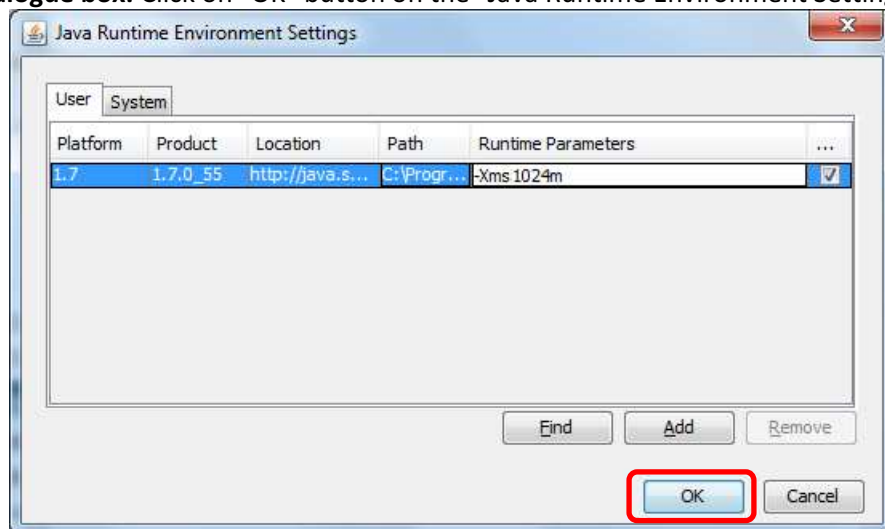
type -Xms 2048m - that assigns 2GB memory for the Java.

type -Xms 3072m - that assigns 3GB memory for the Java, and so on.

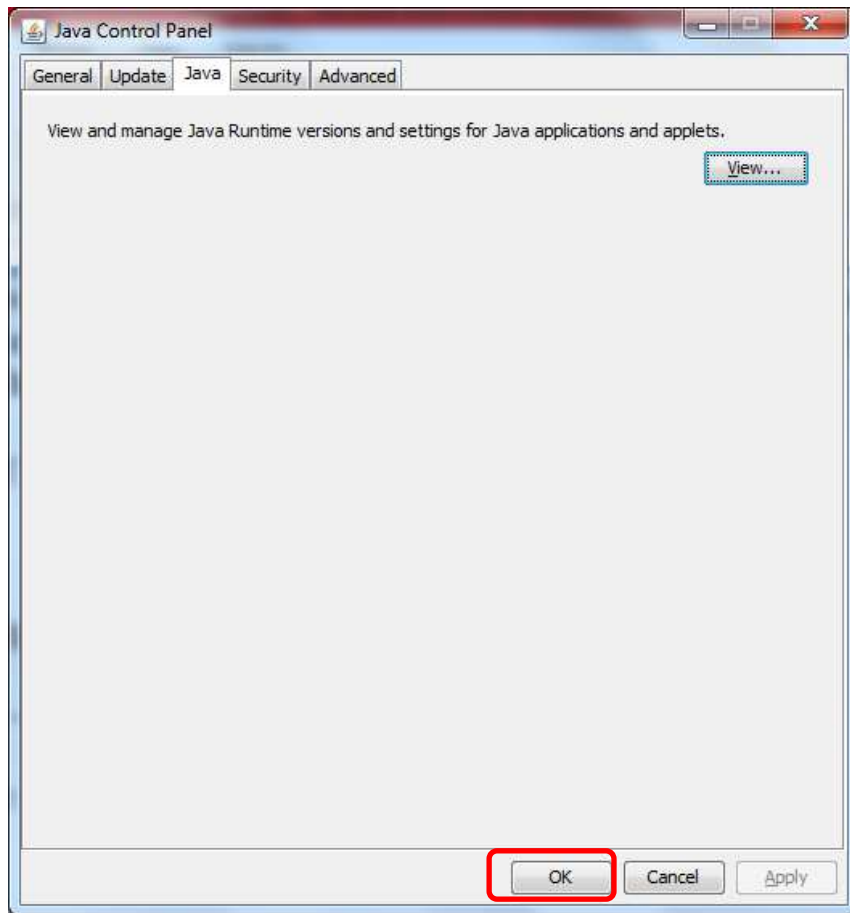
Please note, it begins with a minus sign and ends to an m.

Also note, there is no blank space between characters.

Close the dialogue box. Click on "OK" button on the "Java Runtime Environment Settings" to close it.



Close Java dialogue box. "Apply" button in the "Java Control Panel" has been enabled now. You should click on "Apply" to finalise the new Java memory. Then click on the "OK" button.



Close the Windows 7 Control Panel.